

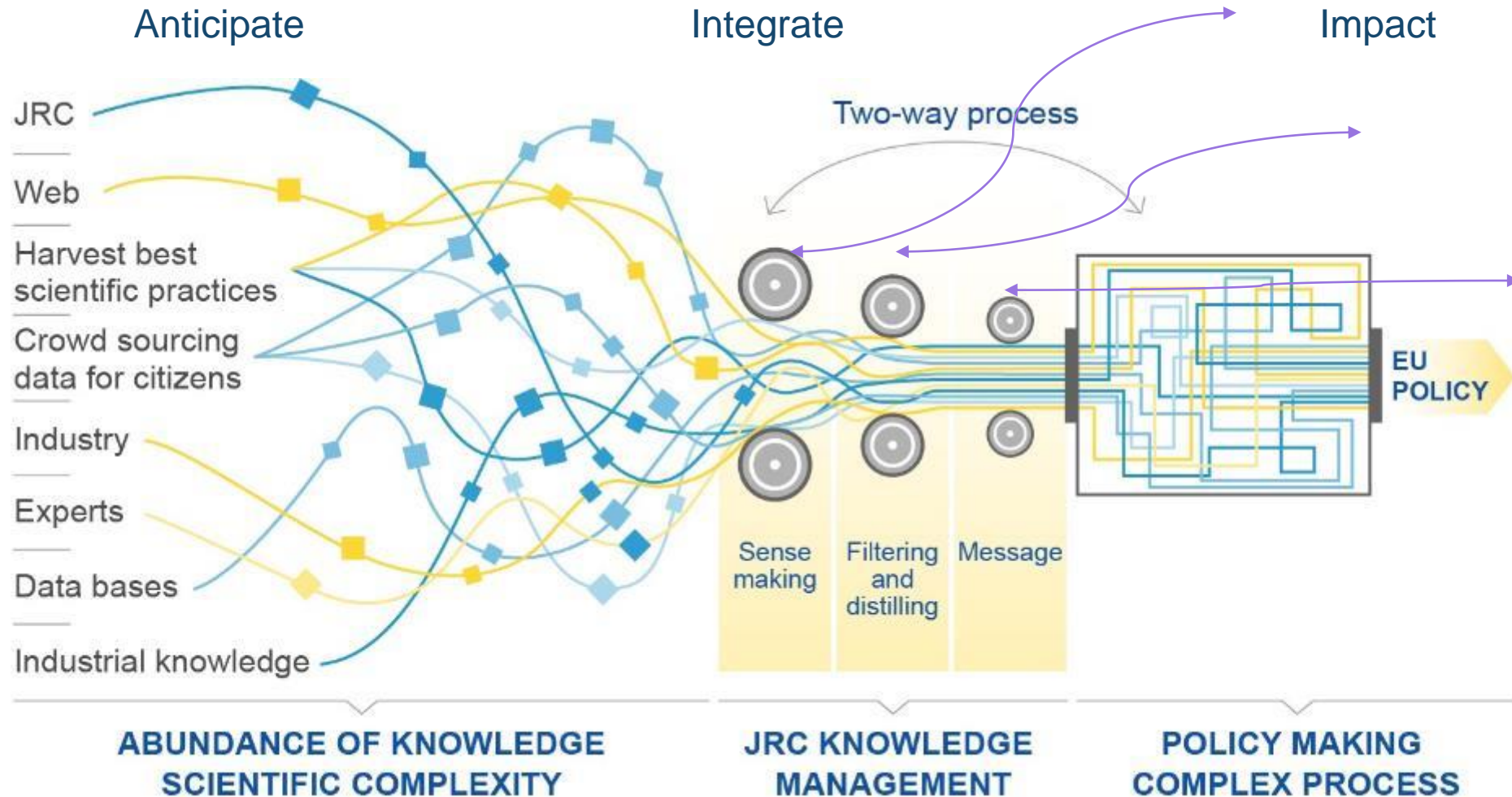
Towards a more comprehensive assessment of socio-economic impacts of Circular Economy policies

Gillian Foster

EEA Webinar - Advancing a Just Transition
Towards Circular Economy

June 18, 2025

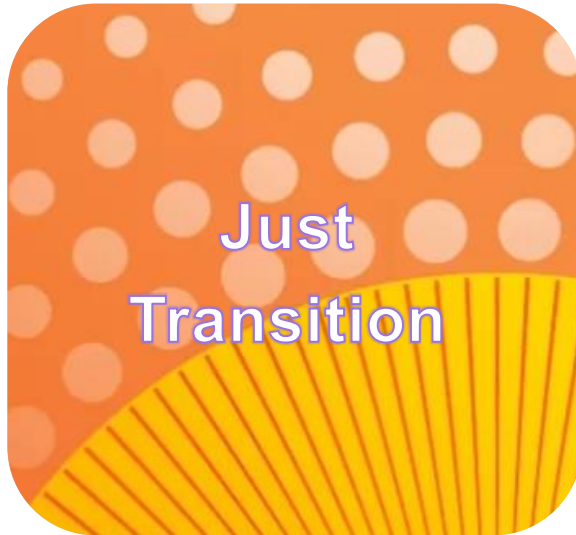
Joint Research Centre Science for policy – yet independent



B5 slide??



Some EU Social Goals



[Leading the just transition - European Commission](#)



[European Pillar of Social Rights - Building a fairer and more inclusive European Union - European Commission](#)



[EU Charter of Fundamental Rights | European Union Agency for Fundamental Rights](#)

Sources of each graphic below, hyperlink





Towards a more comprehensive assessment of socio-economic impacts of Circular Economy policies

Lessons from an analysis of EU impacts assessments and evaluations

Foster, G., Marschinski, R., Calisto Friant, M., Leiputė, B., King, T., Fischer, T.B., Gaušas, S., Švedkauskienė, A., Langham, E.

2024



Joint
Research
Centre

EUR 40164

[JRC Publications Repository - Towards a more comprehensive assessment of socio-economic impacts of Circular Economy policies](#)

Authors: Foster, G., Calisto Friant, M., Leiputė, B., King, T., Fischer, T.B., Gaušas, S., Švedkauskienė, A., Langham, E., Marschinski, R



Simple Questions

What do others do?

Qualitative Analysis of **128**
Documents, Scientific
peer-reviewed and Grey
Literature 2012- 20

Developed New Typology
of Socioeconomic
Impacts of CE Policy

What do we do?

Qualitative Analysis of EU
33 CE Policy Impact
Assessments and
Evaluations

What should we do?

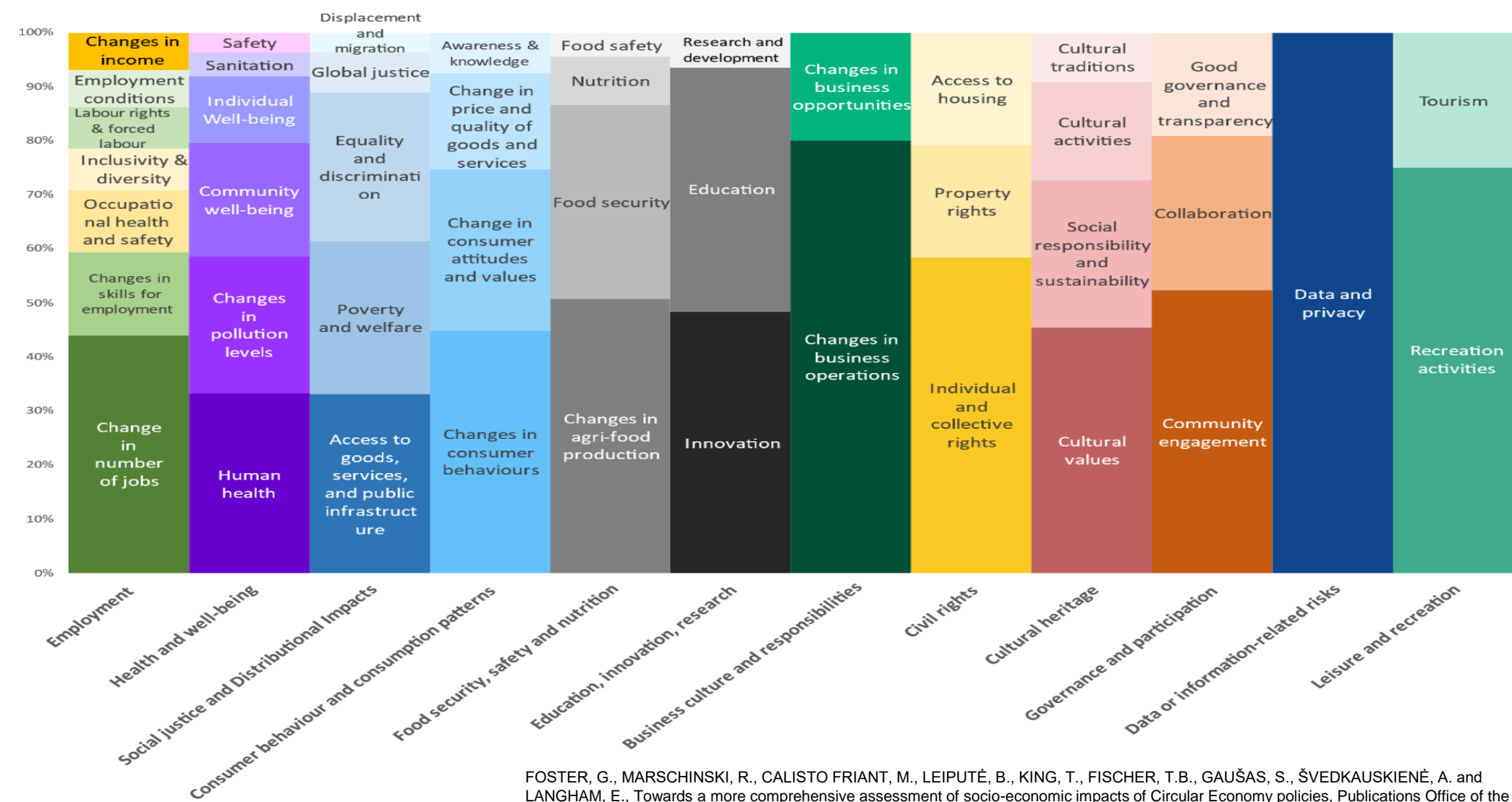
9 Recommendations to
Improve Commission las

Highlighted good
practices



Rich Results - Typology of Socioeconomic Impacts

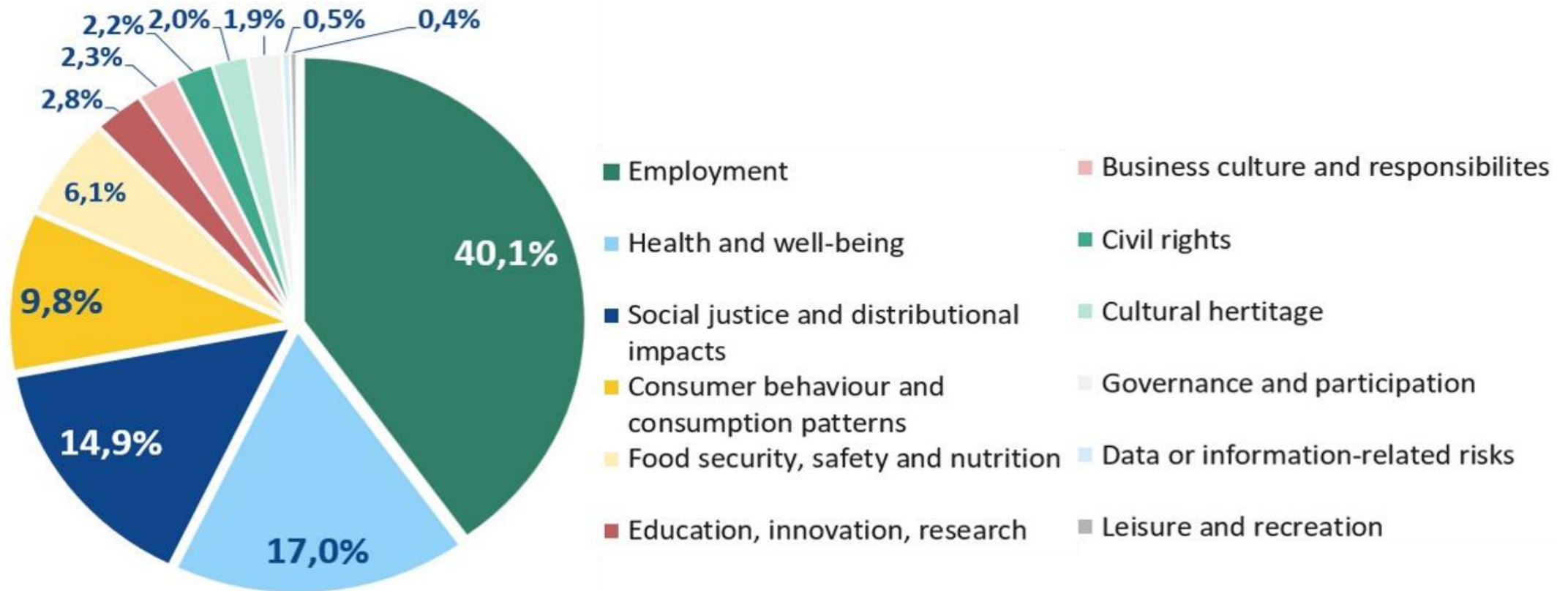
12 dimensions in the dataset of 128 documents



FOSTER, G., MARSCHINSKI, R., CALISTO FRIANT, M., LEIPUTÉ, B., KING, T., FISCHER, T.B., GAUŠAS, S., ŠVEDKAUSKIENĖ, A. and LANGHAM, E., Towards a more comprehensive assessment of socio-economic impacts of Circular Economy policies, Publications Office of the European Union, Luxembourg, 2024, <https://data.europa.eu/doi/10.2760/9756941>, JRC140305.



Results – 82% of literature on: Employment; Health; Social Justice; Consumer behaviour – Many more dimensions



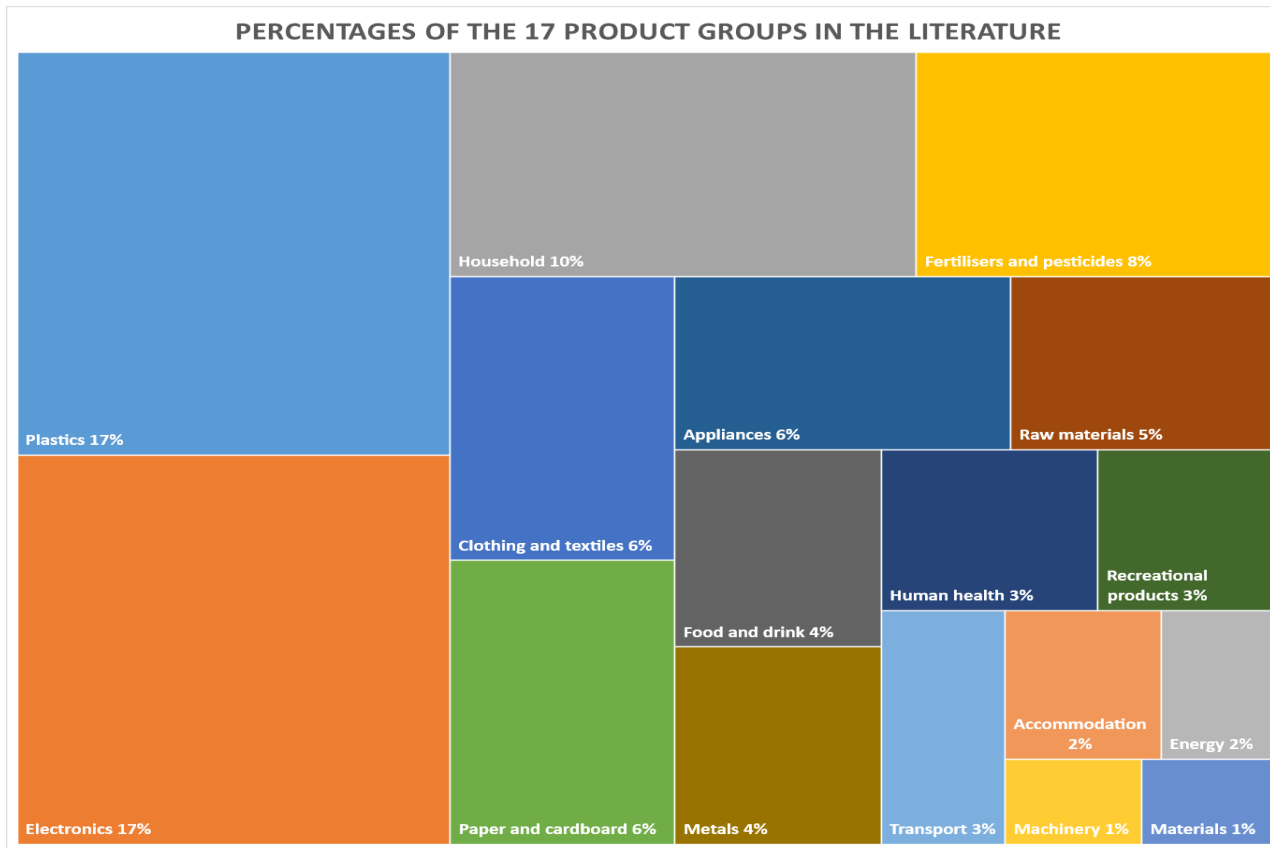
Source: Authors' own elaboration.

Forthcoming. "A new typology for assessing socioeconomic impacts of the circular economy", Foster, G., Calisto Friant, M., Leiputė, B., King, T., Fischer, T.B., Gaušas, S., Švedkauskienė, A., Langham, E., Marschinski, R.

In journal submission, please do not cite or quote.



17 Product Groups



Plastics
Electronics
Household products
Fertilisers and pesticides

Source: Authors' own elaboration.

Forthcoming. "A new typology for assessing socioeconomic impacts of the circular economy", Foster, G., Calisto Friant, M., Leiputė, B., King, T., Fischer, T.B., Gaušas, S., Švedkauskienė, A., Langham, E., Marschinski, R.

In journal submission, please do not cite or quote.



17 Product Groups Intersect with Typology Dimensions

		Product group																
		Accommodation	Appliances	Clothing and textiles	Electronics	Energy	Fertilisers and pesticides	Food and drink	Household	Human health	Machinery	Materials	Metals	Paper and cardboard	Plastics	Raw materials	Recreational products	Transport
t dimensions	Employment (40%)	3	21	38	33	0	46	25	19	12	10	3	21	60	16	65	13	17
	Health and well-being (17%)	6	9	5	13	4	31	19	7	15	0	0	2	2	23	6	8	2
	Social justice and Distributional Impacts (15%)	9	7	8	12	0	34	13	9	3	3	2	10	8	19	9	3	7
	Consumer behaviour and consumption patterns (10%)	4	8	20	15	0	21	6	16	4	2	2	2	28	45	7	2	2
	Food security, safety and nutrition (6%)	0	0	0	0	0	39	9	0	4	0	0	0	2	2	0	0	0

Source: Authors' own elaboration.

Forthcoming. "A new typology for assessing socioeconomic impacts of the circular economy", Foster, G., Calisto Friant, M., Leiputė, B., King, T., Fischer, T.B., Gaušas, S., Švedkauskienė, A., Langham, E., Marschinski, R.

In journal submission, please do not cite or quote.



Using the Typology of Socioeconomic Impacts

Global Scope and Dataset

Socioeconomic Impact of CE Policy Typology – Can be used for ex-post and ex-ante analyses, applied at all levels of government anywhere, and research

Global and EU Scope and Dataset

Guidance and Recommendations for improved socioeconomic impact analysis – Can be applied at all levels of government anywhere

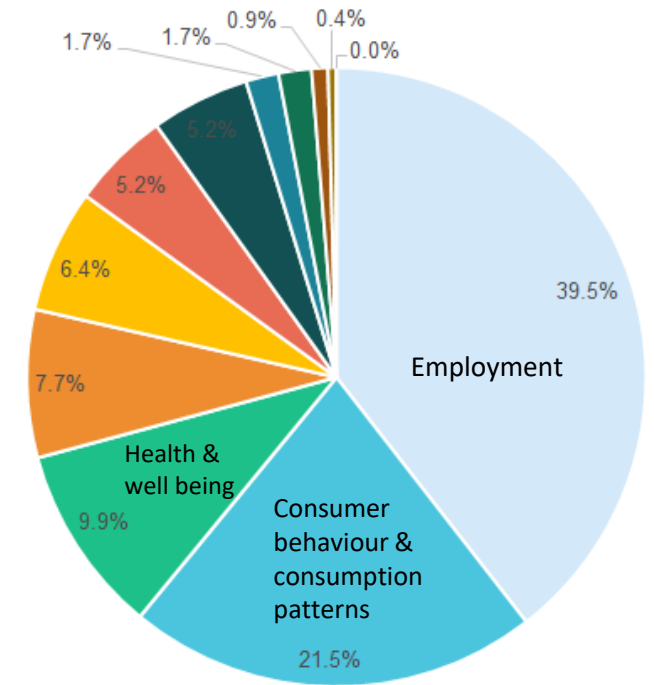
European Union (EU) Scope and Dataset

Assessment of Commission Socioeconomic Impacts in IAs and evaluations – Can inform research, identify current and best practice, and be used to develop guidance and recommendations

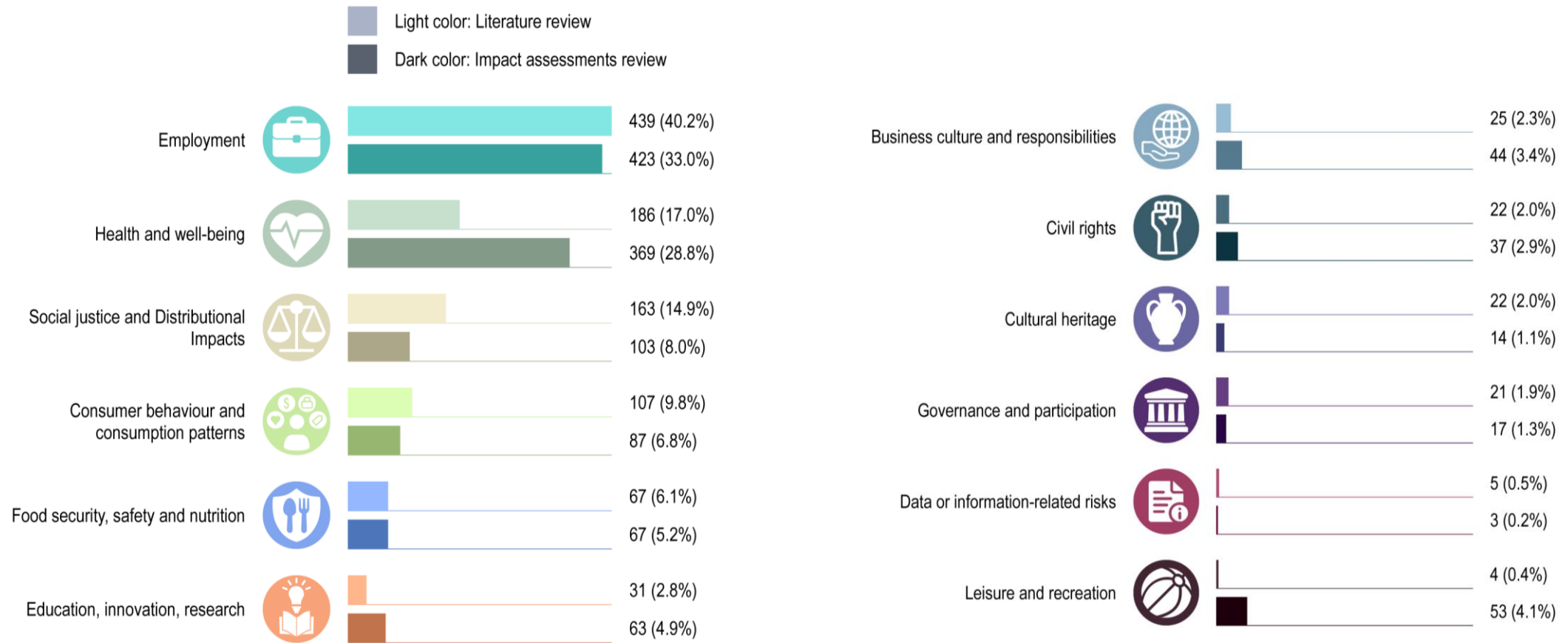
Source: Own elaboration.

Results – Typology Dimensions in 33 Commission IAs and Evaluations

- 11 of 12 typology impact categories present in the 33 Impact Assessments
- Generally missing EU socioeconomic goals i.e., Pillar of Social Rights
- 3 Impacts less present than in the literature:
 - Food safety, and nutrition
 - Social Justice
 - Access to housing and property rights
- 3 Impacts more present than in the literature:
 - Education, innovation, research
 - Business culture and responsibilities
 - Occupational Safety & Health



Results - Socioeconomic Impacts Comparison of two datasets



Source: Own elaboration.



Simple Questions

What do others do?

Qualitative Analysis of **128**
Documents, Scientific and
Grey Literature 2012- 20

Developed New Typology
of Socioeconomic
Impacts of CE Policy

What do we do?

Qualitative Analysis of EU
33 CE Policy IAs and
Evaluations

What should we do?

9 Recommendations to
Improve Commission IAs

Highlighted good
practices



Chapter 3 – Identifying impacts in evaluations, fitness checks and impact assessments..... 135

TOOL #27. EXTERNAL TRADE AND INVESTMENT

3. HOW TO ASSESS IMPACTS ON EXTERNAL TRADE AND INVESTMENT

TOOL #29. FUNDAMENTAL RIGHTS, INCLUDING THE PROMOTION OF EQUALITY

TOOL #30. EMPLOYMENT, WORKING CONDITIONS, INCOME DISTRIBUTION, SOCIAL PROTECTION, AND INCLUSION

TOOL #34. TERRITORIAL IMPACTS



Better Regulation
TOOLBOX

July 2023



Recommendations 1 to 4

-
- 1 Improve transparency by clearly identifying and describing the methods used to select and analyse the socioeconomic impacts of a CE policy.**
 - 2 Use the typology to identify relevant possible socioeconomic impacts, including but not limited to employment and consumer behaviour aspects.**
 - 3 Employment is more than number of jobs. Relevant impacts that should be taken into account include wage effects, skills, and work quality.**
 - 4 Expand the quantitative and qualitative models used to analyse socioeconomic impacts.**
-

Recommendations 5 to 9

-
- 5 Highlight regional distributional impacts, either between different Member States (MS) or within MS when relevant and practical.**
 - 6 Improve coverage of how socioeconomic impacts will be measured and monitored in future.**
 - 7 Enhance assessment of SME impacts, as stipulated by the Better Regulation Guidelines (BRG).**
 - 8 State findings on socioeconomic impacts outside of the EU more explicitly.**
 - 9 Incorporate and state synergies with socioeconomic objectives set out in EU policies.**
-

Thank you
and Please Reach Out
Gillian.foster@ec.Europa.eu



AI “thinks” we wear lab coats

Generated with AI on June 20, 2024 by Gillian Foster

All Images from JRC Standard Template, Bing copyright free, Commission websites, and images generated with AI (Copilot) on June 20, 2024 by Gillian Foster



EU Science Hub

[Joint-research-centre.ec.europa.eu](https://joint-research-centre.ec.europa.eu)

